

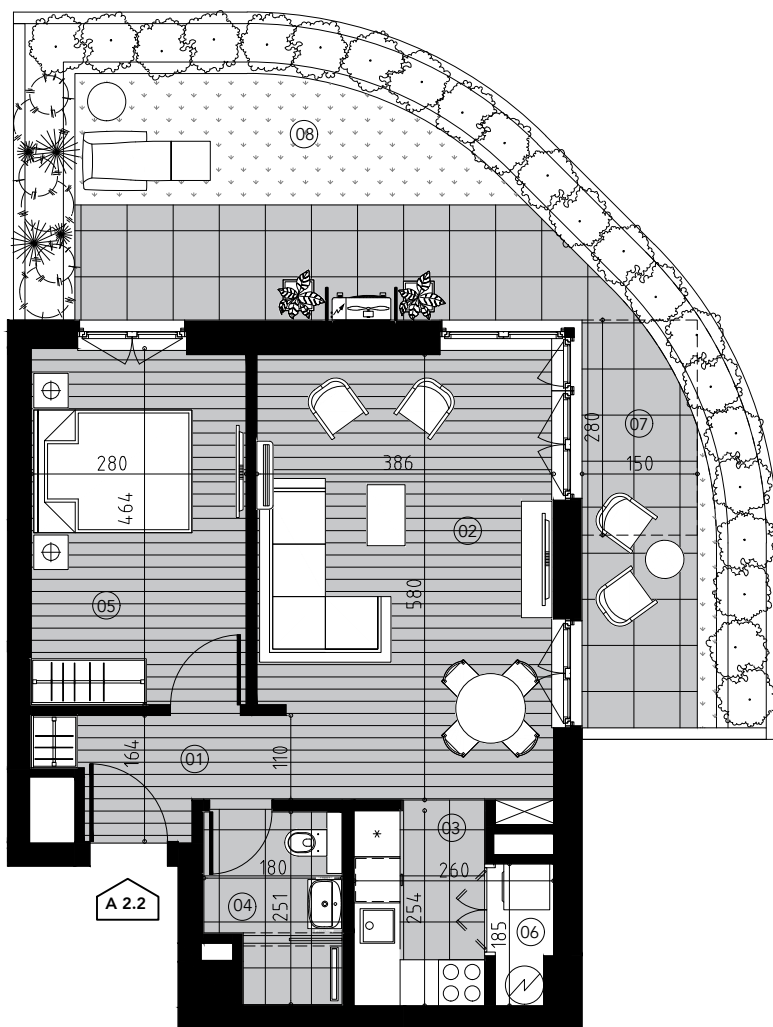
DVOSOBAN STAN TIP 2

sa baštom

Objekti: A, B i C

PR / 12 stanova

Površina: 52.94 m²

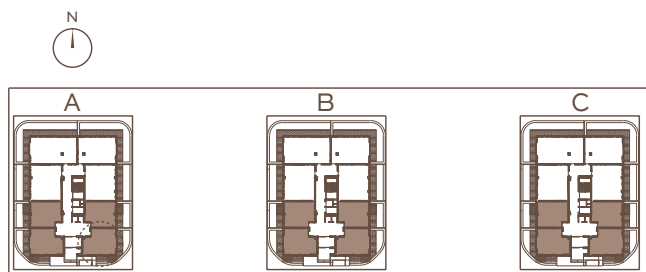


DVOSOBAN STAN m²

1	Ulaz	4.12
2	Dnevna soba	22.33
3	Kuhinja	4.45
4	Kupatilo	4.03
5	Soba	12.93
6	Vešernica	1.32
7	Terasa	3.76

UKUPNO 52.94

8	Bašta	22.51
---	-------	-------



BIG RESIDENCES

MESTO ZA VELIKE SNOVE