

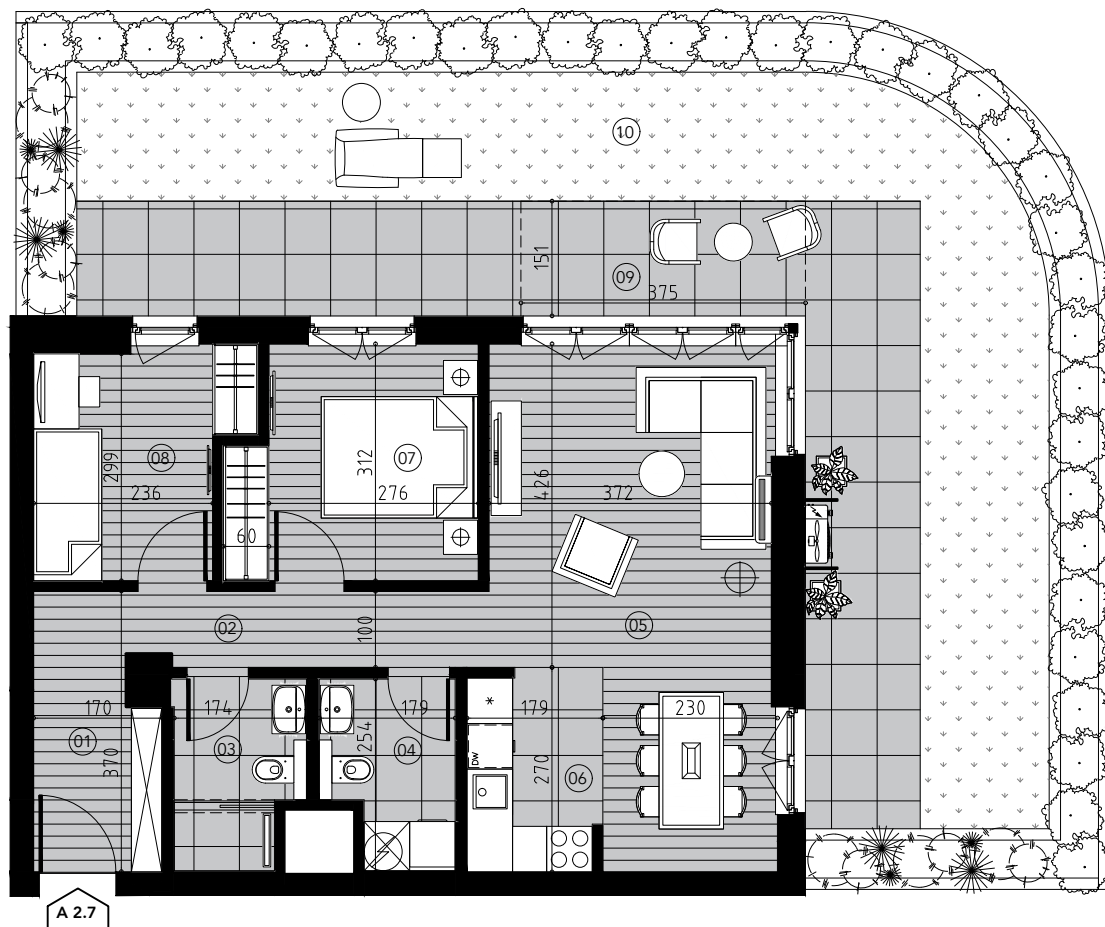
# TROSOBAN STAN TIP 1.1

sa baštom

Objekti: A, B i C

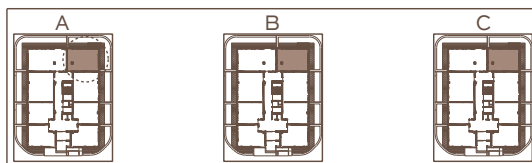
PR / 3 stana

Površina: 69.22 m<sup>2</sup>



## TROSOBAN STAN m<sup>2</sup>

1	Ulaz	4.30
2	Degažman	5.92
3	Kupatilo	4.01
4	Toalet	3.97
5	Dnevna soba	23.18
6	Kuhinja	4.58
7	Soba	9.68
8	Soba	7.92
9	Terasa	5.66
<b>UKUPNO</b>		<b>69.22</b>
10	Bašta	54.94



**BIG RESIDENCES**

MESTO ZA VELIKE SNOVE