

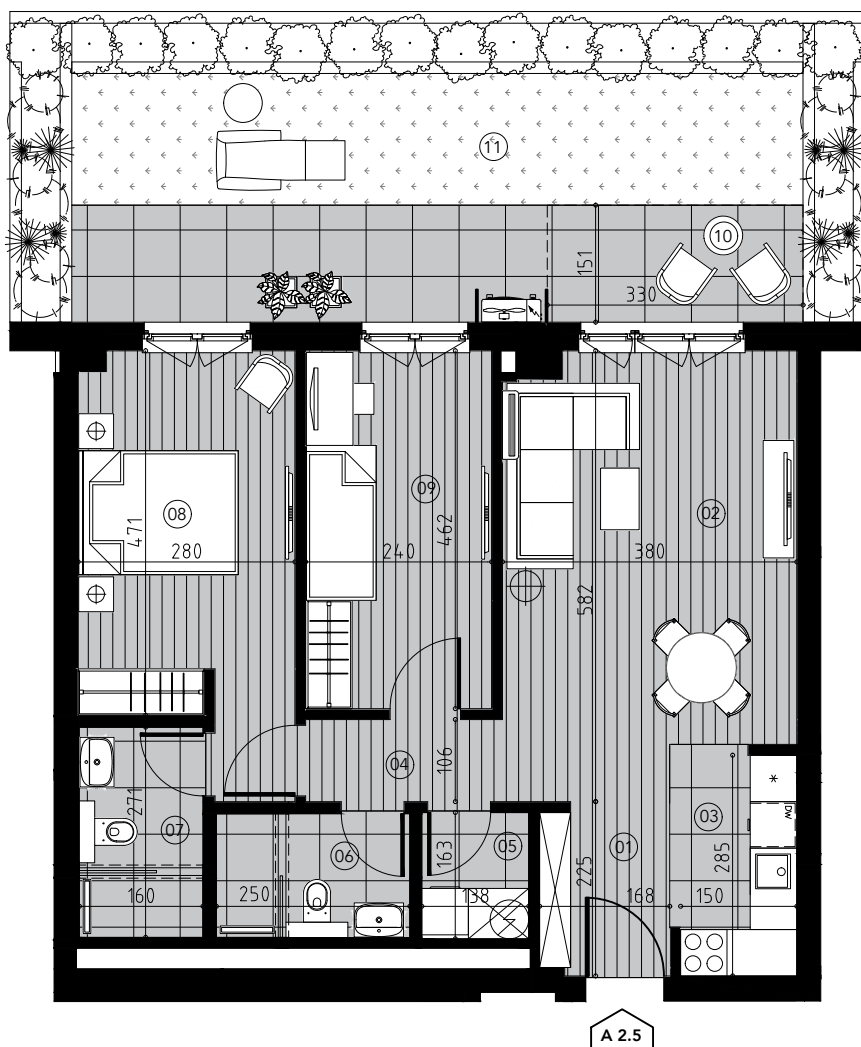
TROSOBAN STAN TIP 2.1

sa baštom

Objekti: A, B i C

PR / 12 stanova

Površina: 72.27 m²

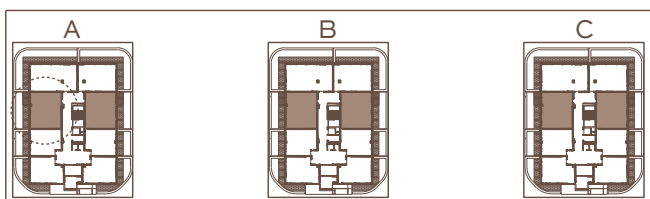


TROSOBAN STAN m²

1	Ulaz	3.69
2	Dnevna soba	20.64
3	Kuhinja	4.47
4	Degažman	2.69
5	Vešernica	2.25
6	Kupatilo	3.99
7	Kupatilo	4.34
8	Soba	14.13
9	Soba	11.09
10	Terasa	4.98

UKUPNO 72.27

8	Bašta	25.32
---	-------	-------



BIG RESIDENCES

MESTO ZA VELIKE SNOVE